



COL Quarter 3 2020-21  
City of London Rough  
Sleeping Report  
RSSG

- Performance Team
- E: [ellie.ward@cityoflondon.gov.uk](mailto:ellie.ward@cityoflondon.gov.uk)

- This report updates Members on the level and nature of homelessness and rough sleeping activity within the City of London for the third quarter (Q3) of 2020/21- with background information on the year 2019/20.
- For the purpose of this report, the definitions of the three categories of rough sleepers considered are described in below:

<b>New rough sleepers (Flow)</b>	Those who had not been contacted by outreach teams and identified as rough sleeping before the period.
<b>Living on the streets (Stock)</b>	Those who have had a high number of contacts over three weeks or more, which suggests that they are living on the streets.
<b>Intermittent rough sleepers (Returners)</b>	People who were seen rough sleeping at some point before the period began, and who were contacted in the period – but not seen regularly enough to be ‘living on the streets’.

# Number of rough sleepers – comparing quarterly trends

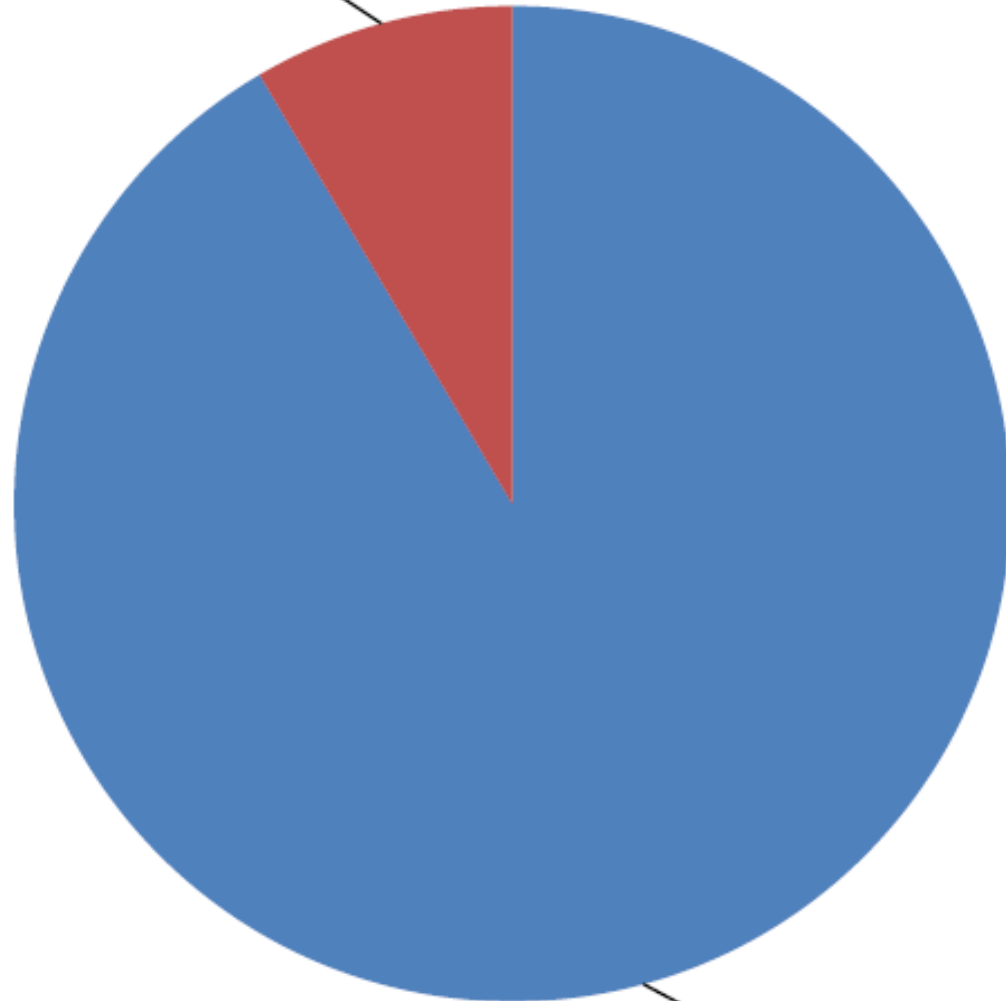
	2019/20				2020/21			% change from previous quarter
Local Authority	Q1	Q2	Q3	Q4	Q1	Q2	Q3	
City of London	174	181	145	172	140	105	132	26%
Southwark	142	195	201	197	221	145	197	36%
Tower Hamlets	137	190	127	137	155	111	144	30%
Camden	183	265	235	242	239	170	185	9%
Westminster	888	1097	768	834	710	900	692	-23%
Greater London	3172	3985	3637	3692	4227	3444	3307	-4%

# Composition of rough sleepers in Q3 2020/21

	New rough sleepers	New Rough Sleepers - Joined LOS	Intermittent Rough Sleepers (returner)	Living on the Streets (All) Longer Term	LOS - RS205+ (entrenched)	Total
<b>City of London</b>	39	3	52	44	6	132
<b>Southwark</b>	100	5	63	39	3	197
<b>Tower Hamlets</b>	58	2	68	20	3	144
<b>Camden</b>	62	1	103	21	1	185
<b>Westminster</b>	221	9	357	123	16	692
<b>Greater London</b>	1582	47	1360	412	39	3307

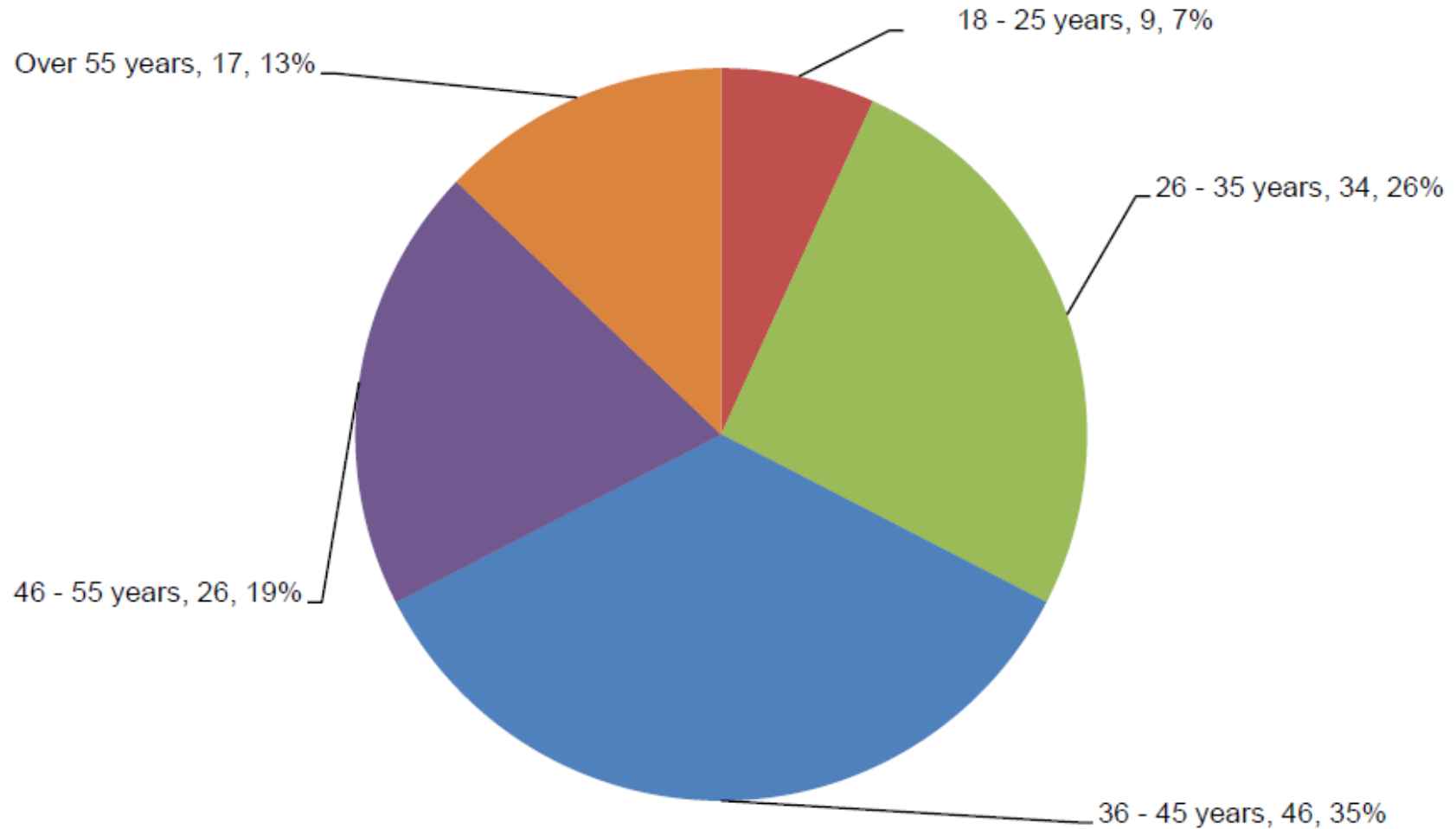
# Gender- Q3 2020/21

Female, 11, 8%

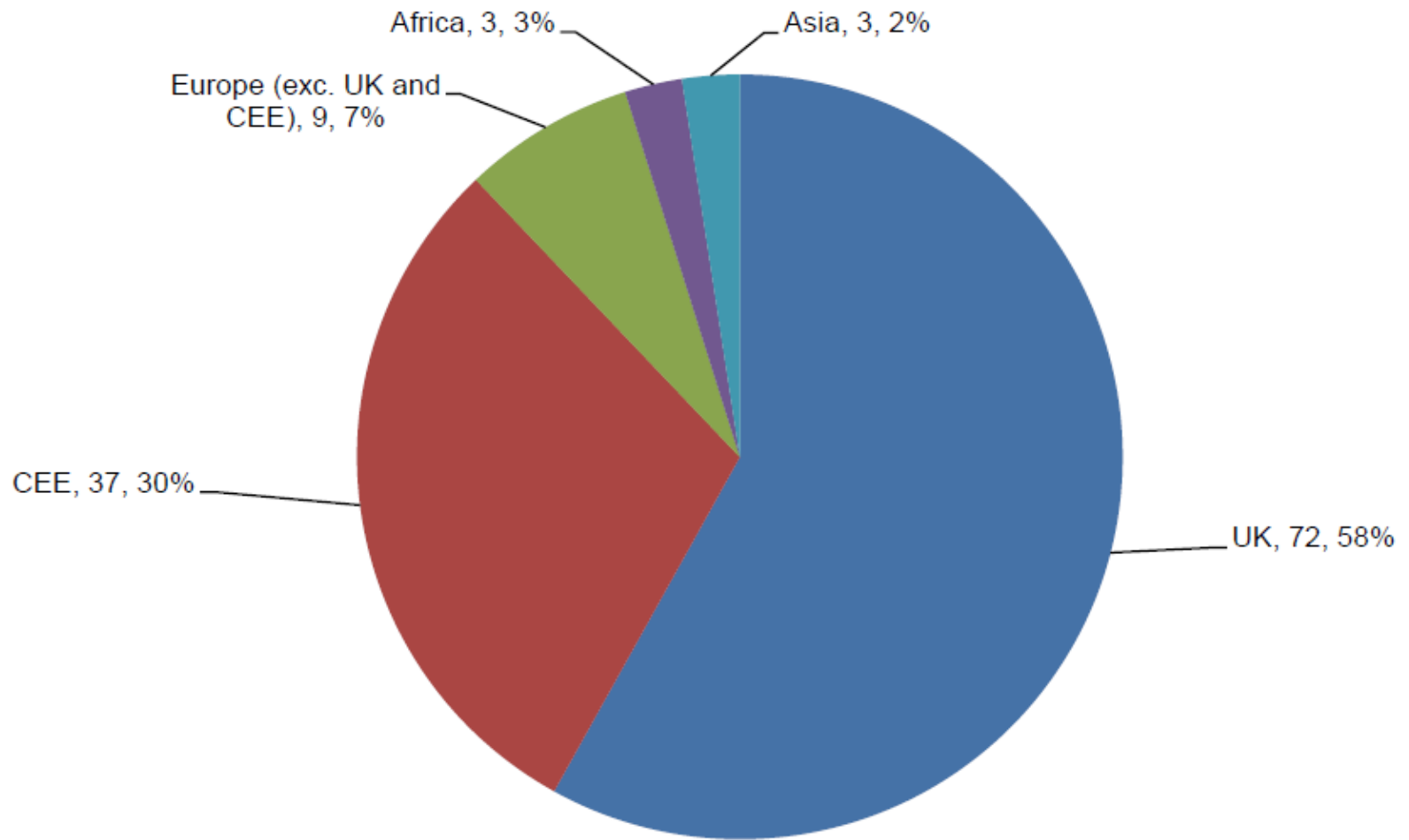


Male, 119, 92%

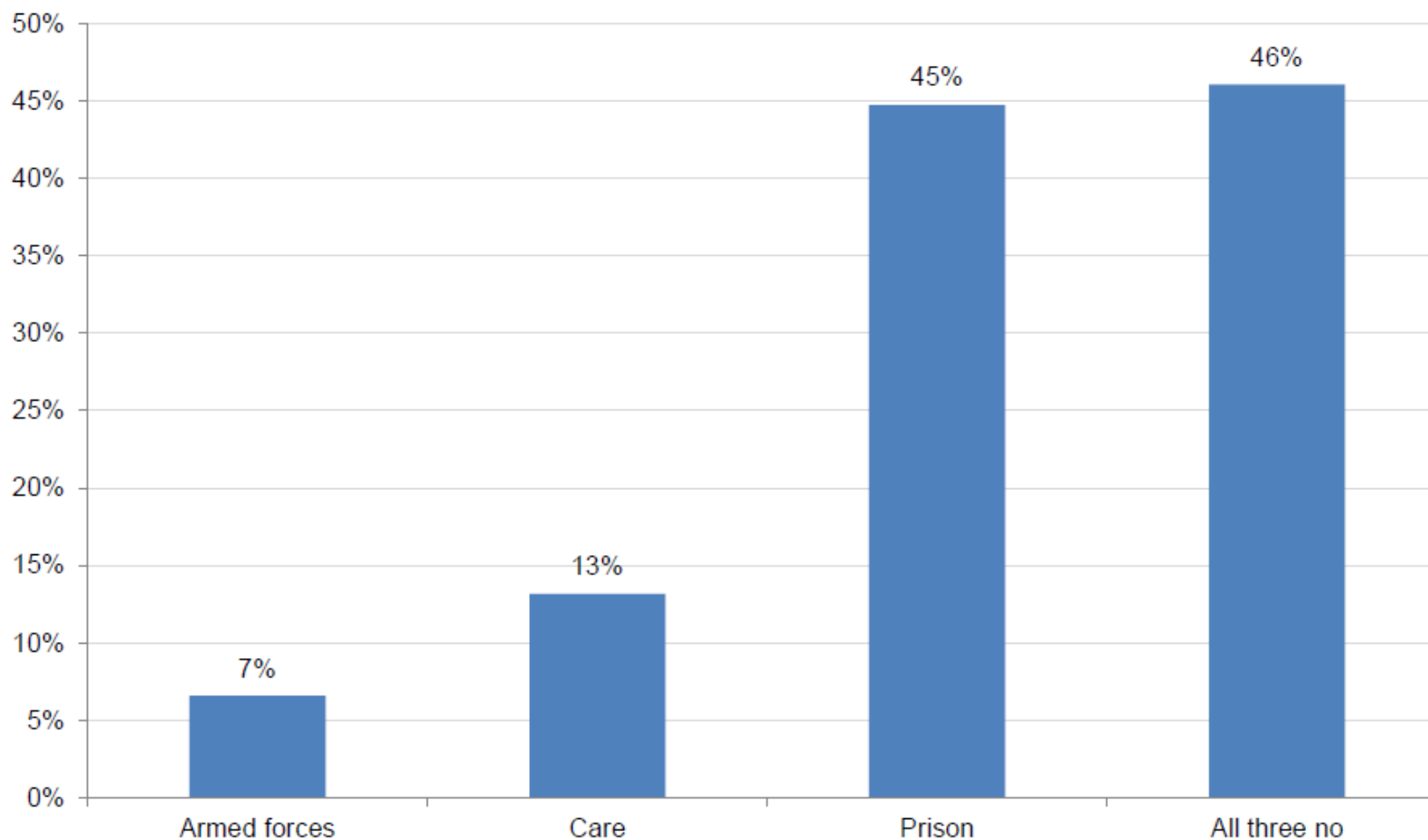
# Age- Q3 2020/21



# Nationality of COL rough sleepers during Q3 2020/21

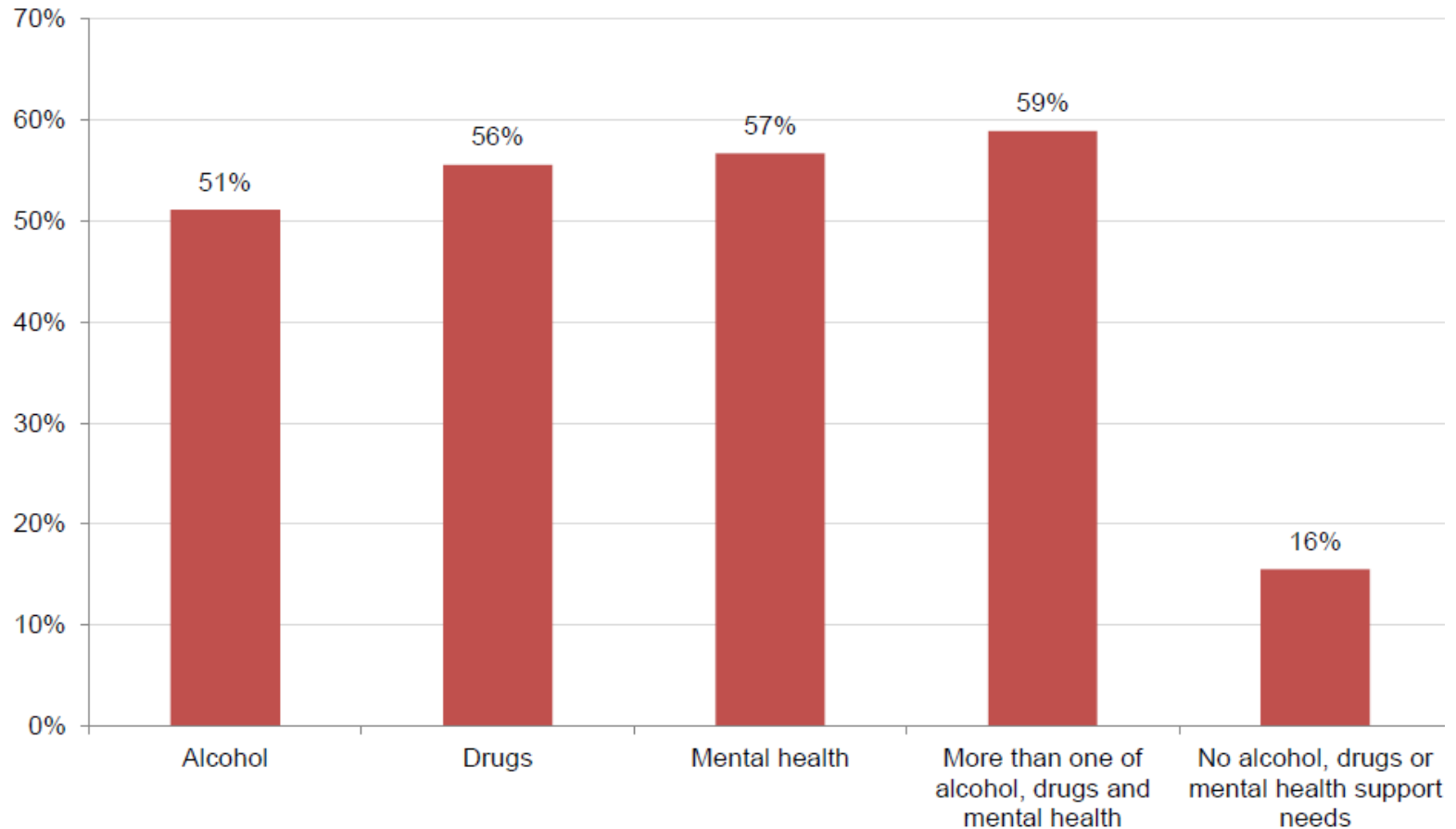


# Institutional & Armed Forces History- Q3 2020/21



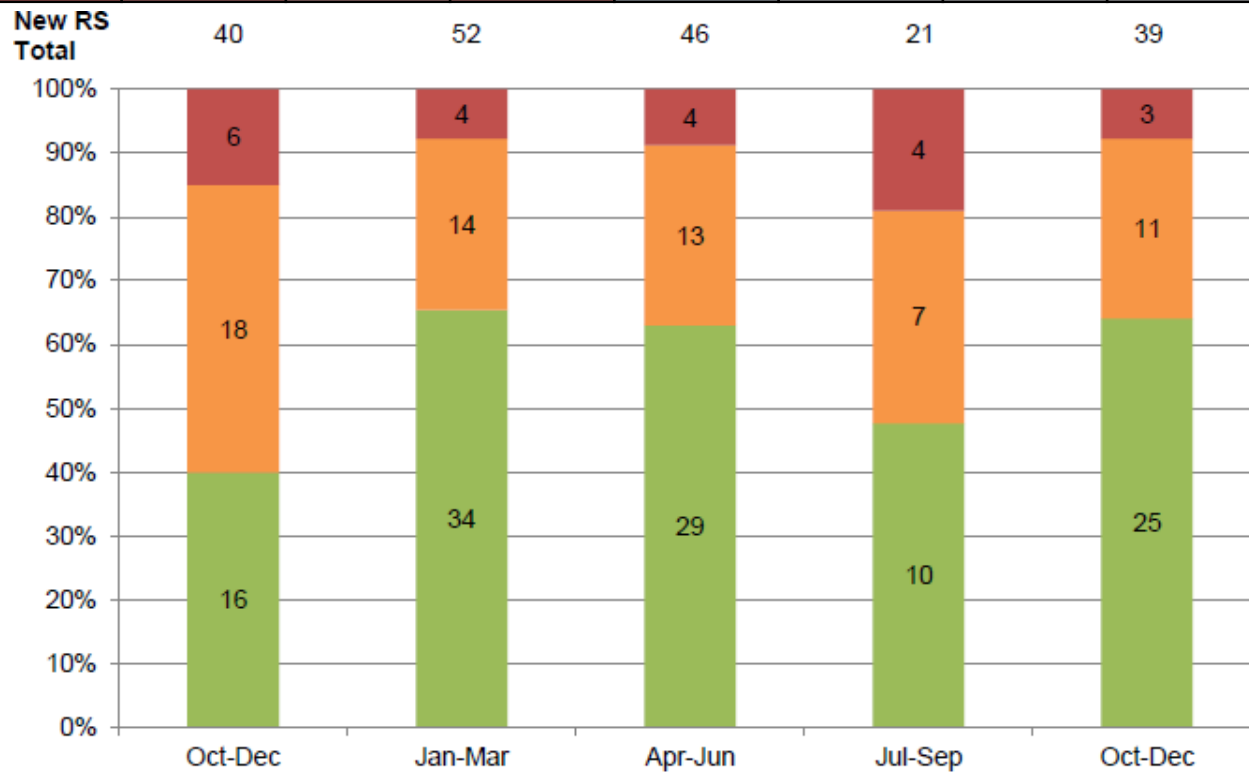


# Support needs of people sleeping rough Q3 2020/21



# New Rough Sleepers (Flow)

	2015/16	2016/17	2017/18	2018/19	2019/20	Q1 2020/21	Q2 2020/21	Q3 2020/21	DOT
City of London	51.10%	52.80%	35.10%	47.80%	47.23%	32.85%	20.00%	29.54%	↑
Greater London	65.20%	62.80%	59.50%	62.40%	65.75%	63.11%	55.19%	47.84%	↓



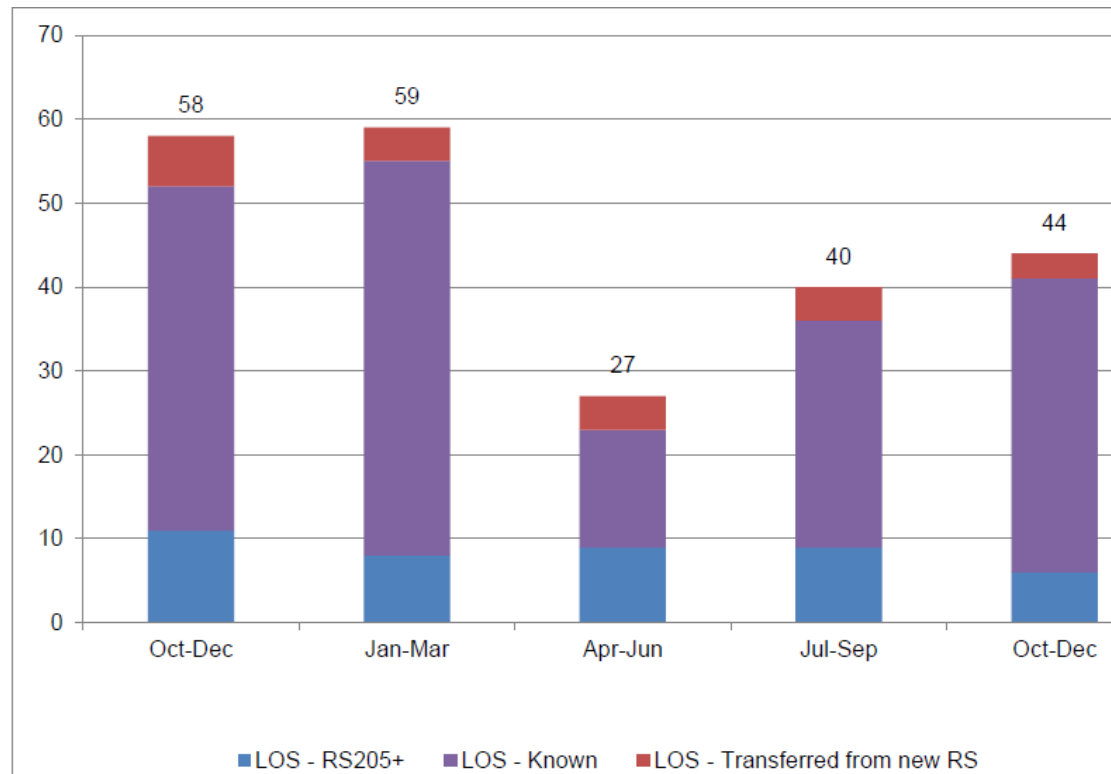
- New RS joining living on the streets population
- New RS with a second night out but not living on the streets
- New RS with no second night out

# Percentage of new rough sleepers not spending a second night out (NSNO)

	2019/20				2020/21			Direction of travel (DOT)
	Q1	Q2	Q3	Q4	Q1	Q2	Q3	
<b>City of London</b>	63%	70%	40%	65%	63%	48%	64%	↑
Southwark	70%	71%	77%	74%	62%	72%	73%	↔
Tower Hamlets	84%	79%	42%	76%	81%	70%	74%	↑
Camden	75%	74%	74%	66%	68%	81%	69%	↓
Westminster	77%	87%	82%	87%	75%	72%	67%	↓
Greater London	80%	80%	77%	79%	81%	77%	74%	↔

# Living on the streets longer-term rough sleepers (stock)

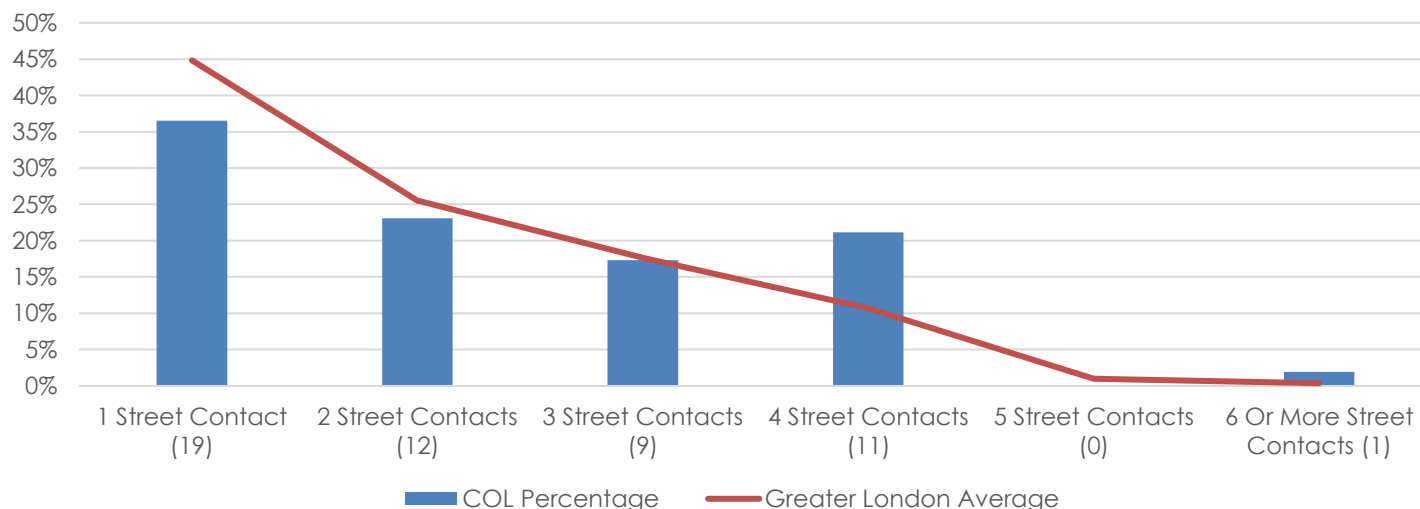
	2015/16	2016/17	2017/18	2018/19	2019/20	Q1 2020/21	Q2 2020/21	Q3 2020/21	DOT
City of London	35.90%	34.00%	48.30%	37.40%	32.48%	19.28%	38.09%	33.33%	↓
Greater London	22.60%	24.40%	25.50%	23.50%	22.16%	6.24%	9.75%	12.45%	↑



# Intermittent Rough Sleepers (Returners)

Intermittent/Returners	2019/20				2020/21			Direction of Travel
	Q1	Q2	Q3	Q4	Q1	Q2	Q3	
City of London	63	63	53	65	71	48	52	↔
Southwark	65	89	71	80	81	55	63	↑
Tower Hamlets	54	87	63	72	67	53	68	↑
Camden	97	129	125	125	98	96	103	↔
Westminster	311	355	332	360	297	356	357	↔
Greater London	1298	1504	1489	1495	1322	1239	1360	↑

Number of bedded down street contacts  
Q3 2020/21



# Quarterly Accommodation Stays

Accommodation	No. of stays							% share						
	2019/20				2020/21			2019/20				2020/21		
	Q1	Q2	Q3	Q4	Q1	Q2	Q3	Q1	Q2	Q3	Q4	Q1	Q2	Q3
City Assessment Hubs	22	13	9	5	0	0	0	47%	32%	19%	7%	0%	0%	0%
Bed & breakfast	11	8	9	6	2	1	3	23%	20%	19%	8%	1%	2%	4%
Clinic/detox/rehab	0	0	0	0	0	0	0	0%	0%	0%	0%	0%	0%	0%
COVID-19 Emergency Accommodation (Local)	0	0	0	18	58	28	33	0%	0%	0%	25%	43%	61%	46%
COVID-19 Emergency Accommodation (Pan London)	0	0	0	8	63	0	1	0%	0%	0%	11%	46%	0%	1%
Hostel	5	3	7	8	8	7	4	11%	7%	15%	11%	6%	15%	6%
Long-term accommodation	1	3	2	2	3	5	3	2%	7%	4%	3%	2%	11%	4%
No second night out	0	0	0	0	0	0	/	0%	0%	0%	0%	0%	0%	/
Temporary accommodation (local authority)	6	12	4	7	0	0	1	13%	29%	9%	10%	0%	0%	1%
SWEP (Local)	0	0	1	1	0	0	3	0%	0%	2%	1%	0%	0%	4%
SWEP (Pan-London)	0	0	0	0	0	0	0	0%	0%	0%	0%	0%	0%	0%
Winter/Night Shelter	2	1	7	0	0	0	0	4%	2%	15%	0%	0%	0%	0%
<b>Total Stay</b>	<b>47</b>	<b>40</b>	<b>39</b>	<b>55</b>	<b>136</b>	<b>46</b>	<b>72</b>	<b>47</b>	<b>40</b>	<b>39</b>	<b>55</b>	<b>136</b>	<b>46</b>	<b>72</b>